

Construction Brickwork.6219

Level 1 qualification, Award & Certificate

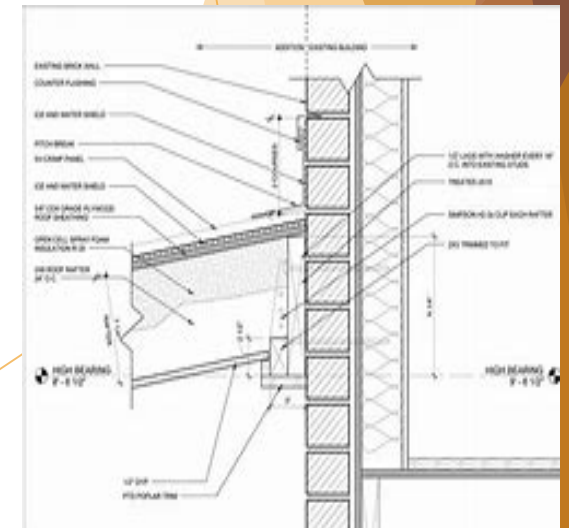
Term	Meaning
HSE	Health and Safety Executive.
PPE	Personal Protective Equipment
Tape measure.	A ruler is a tool for measuring lengths and transferring measurements . A device for drawing straight lines is a straight edge.
Masonry Saw	Masonry Saws. Saws for cutting brick, stone, masonry . These are all heavy duty saws for tradesmen, builders and contractors and are built to take the rigors of everyday site work.
Spirit Level	A spirit level, bubble level, or simply a level, is an instrument designed to indicate whether a surface is horizontal (level) or vertical (plumb).
Club Hammer	. Club Hammer: A club hammer is essential for those doing masonry work and serves many purposes. It is like a mini sledgehammer (about 3-5 pounds) that is great for delivering precise but heavy blows, driving masonry nails, driving chisels, and can also be used for demo work.
Chisels	The plugging or flute chisel as it is also known is the main tool to use when it comes to removing old pointing from brickwork and masonry for repointing with new mortar.
Bolster	Bolster chisels, with their relatively rounded edges, are designed to crack rather than to cut through items. The wide blade allows them to induce a crack into the widest of surfaces, such as masonry blocks etc.... It also allows them to be used for cleaning surfaces of mortar, concrete and other potential spillages.
Builders Square	. Used to ensure angles are precisely measured and adhered to, they're used for projects large and small - from constructing cabinetry to framing buildings. Framing square are the simplest option, with an L-shape that's perfect for checking right angles. Speed squares or rafter squares are rigid triangles designed to measure both 45 and 90 degree angles precisely.
Lines and pins	Line and pins consists a thread whose ends are connected with two solid metal rods with pin points. It is used to level the alignment of brick course while brick laying.
Trowel	Trowel is used to lift and apply the cement mortar in small quantities. It is made of steel and wooden handle is provided for holding. The ends of trowel may be pointed or bull nosed.
Pointing trowel	Pointing Trowels allow you to apply layers of mortar easily & smoothly in between each brick, whilst brick jointers can finish the job, giving the gap and depth of mortar you require for the best finish
Pointing iron	. pointing irons, also known as tooling or compression irons, help the bricklayer to create strong and durable mortar joints of consistent quality and cosmetic appearance.

Unit No: Assignment 005/102/119/122/124

All units 005/102/105

- .Constructing half brick walling
- Introduction of the construction industry.
- Constructing half brick return corners.
- Laying block paving.
- Mixing and using concrete.

Unit 005



Construction Electrical.6219

Level 1 qualification, Award & Certificate

Term	Meaning
HSE	Health and Safety Executive.
PPE	Personal Protective Equipment
Screw drivers.	Electrical work, insulated tools come highly recommended Remember that, just because your screwdriver have plastic handles, this doesn't guarantee they can and will insulate you from an electrical shock.
Pliers/Long nose pliers	Long nose pliers , are most commonly used for detailed work with wire, allowing the user greater control when bending, as well as normal electrical pliers.
Wire cutters	Wire and cable cutters are tools that have been designed to properly cut either wire or cable with minimal damage to the insulation or internal conductors of the wire or cable . Having a clean cut on a wire or cable can improve the quality of an electrical connection.
Wire strippers	Most wire strippers are capable of performing several different tasks, but their primary purpose is to strip the insulation off of the end of wires . This is accomplished with slotted cutting blades located in the jaws of the stripper.
Pendant	A light pendant , sometimes called a drop or suspender, is a lone light fixture that hangs from the ceiling usually suspended by a cord, chain, or metal rod .
Terminals	Terminals are point in a electrical fitting that connect the wires to the fitting to complete a ring main.
3 Core	What is a 3 core power cable? 3 core cable is comprised of live, neutral and earth conductors , suitable for 'Appliance Class I' (connectivity to earth). 2 core cable is comprised of live and neutral conductors only, suitable for 'Appliance Class II' (no connectivity to earth).
Consumer unit	A consumer unit, also known as a fuse board or electrical fuse box, distributes electricity from the mains supply to individual circuits around a property .
socket	A socket outlet is the familiar item mounted on the wall into which a plug can be inserted. ... A double socket outlet is NOT rated at 26A - it 13A shared between the two outlets. Therefore if you intend to have two high power appliances in the same place
1 and 2 way light switch	1 Way Switches: If a light switch is '1 way' this means it is just an on/off switch. ... The single switch controls a single light (or lighting circuit). 2 Way Switches: A '2 way' switch means there is another switch controlling the same light . These are often used on a stair case, large room with switches by each door.
Multimetre	4 test instruments most frequently used by electricians •Continuity tester. •Insulation resistance tester. •Earth fault loop impedance tester. •RCD tester.
Fuse	The fuse breaks the circuit if a fault in an appliance causes too much current to flow . The fuse contains a piece of wire that melts easily. ... If the current going through the fuse is too great, the wire heats up until it melts and breaks the circuit.

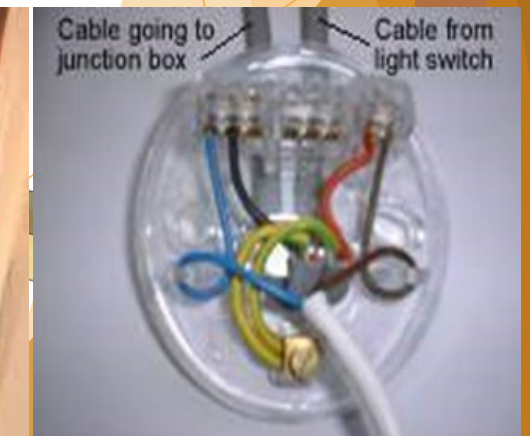
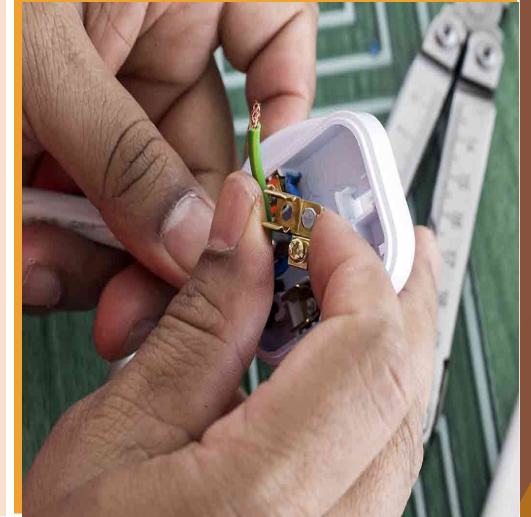
Unit No: Assignment 011/136/137

All units 011/136/137

- Identify the correct PPE.
- Different types of materials and fittings.
- Process of marking out.
- Identify the correct equipment.
- Connecting flex to common apparatus.
- Installing one way lighting circuit.
- Select the right tools.
- State the health and safety risks and hazards related to the job.
- Satisfactorily complete testing of the circuit.

Unit 011

Connecting a flex to common apparatus.



Construction Health and Safety

Level 1 qualification, Award & Certificate

City & Guilds Qualification 6219.

Term	Meaning
HSE	Health and Safety Executive.
PPE	Protective Protective Equipment
Warning	A warning sign is a type of sign which indicates a potential hazard, obstacle, or condition requiring special attention.
Prohibited	A prohibition sign is a safety sign prohibiting behaviour likely to cause a risk to health and safety.
Safe Condition	An "emergency escape or first-aid sign" (called a 'safe condition sign') is a safety sign giving information on escape routes, emergency exits, first-aid or rescue facilities.
Mandatory	A sign prescribing specific behaviour (e.g eye protection must be worn)
COSHH	The occupational use of nanomaterials is regulated under the Control of Substances Hazardous to Health (COSHH).
Hard Hat	Hard hats are protecting the head when working on construction sites where heavy items are lifted or when working at height.
Mask	Dust masks protect workers against airborne particles, and are an important part of workplace safety, particularly on construction sites and in workshops.
Goggles	Goggles or glasses that provide reliable protection against smoke, dust particles, light exposure and electrical discharge.
Boots	Steel toe work boots are designed to protect your toes and upper foot bones from injury by falling objects , and soles are designed to protect against puncture.
Ear Defenders	Ear defenders are made with hard metal or thermoplastic headbands and soft acoustic foam earpads that help protect the ears from loud noises.
Hi-visibility	form of protective clothing that's made from fluorescent material with reflective tape or shapes added for extra visibility.
Gloves	Work gloves are worn to cover and protect hands and wrists from potential hazards. Safety gloves are designed to prevent serious injuries such as cuts, splinters and burns.
RAMS	Risk Assessment Method Statement — an important health and safety document that is completed to identify the steps to be undertaken to carry out a specific activity or task in a safe manner.

Assignment 101.

Introduction to health and safety in construction

- Why health and safety is important.
- The role of the Health and Safety Executive.
- Health and safety regulations.
- Responsibility for health and safety.
- Common causes of accidents in the construction industry-hazards.
- Common causes of accidents in the construction industry – risks.
- Risk assessments.
- Health and safety signs categories.
- Identify safety signs.
- Identify COSHH signs.
- Types of Personal protective equipment.(PPE)
- Purpose of personal protective equipment.

An important health and safety document that is completed to identify the steps to be undertaken to carry out a specific activity or task in a safe manner.



Identification of Construction signs.

Construction Plumbing.6219

Level 1 qualification, Award & Certificate

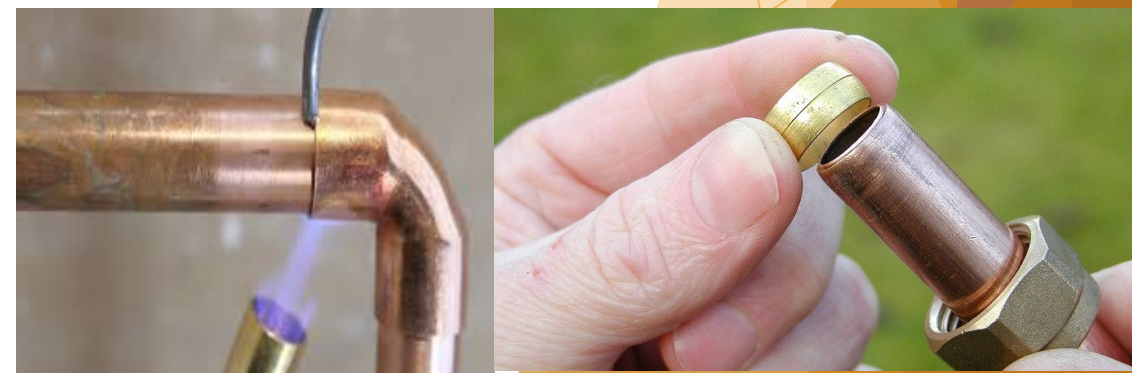
Unit No: Assignment 009/010/128

All units 009/010/128

Unit 009

Replacing a radiator.

- Identify the correct PPE.
- Different types of fittings.
- Process of marking out.
- Identify the correct equipment.
- Drain and fill the radiator.
- Process required to prepare fit copper pipes with non-manipulative fittings.
- Select the right tools.
- State the health and safety risks and hazards related to the job.
- Process of cutting, bending and joining of copper pipes.
- Correct procedure of soldering a pipe.

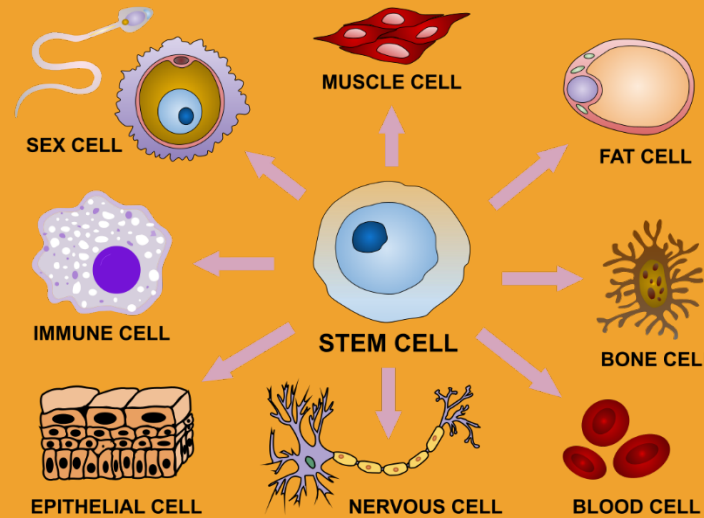


Term	Meaning
HSE	Health and Safety Executive.
PPE	Personal Protective Equipment
Adjustable spanner	Adjustable spanner, you can adjust the head to fit different nuts and bolts ect or hold against when tightening or loosening nuts and bolts.
Adjustable pipe slice	As the pipe cutter is rotated around the pipe in a 360°circle, the cutting wheel cuts through the pipe. With each rotation, the wheel penetrates through more of the pipe. ... Adjustable pipe cutters require the handle to be turned after every couple of rotations to keep the cutting wheel pressed firmly on the pipe
File	A metal file is used to smooth down any rough edges once the pipe is cut . This can be used on all types of pipes, whether they are plastic pipes or metal.
Pump pliers	Pump pliers, you can adjust the size of the jaws to tighten, loosen Just hold against when working with a compression.
Pipe bender	Pipe benders are tools for bending pipes and tubes made of various materials. It can work on a variety of metals such as steel, aluminium and copper and then form them into various curves and angles. There are four types of pipe bender: double pipe, mini pipe, ergonomic, free standing, ratchet pipe and line pipe.
Pipe bender slide	Pipe bender slide is to hold the pipe in place whilst bending the pipe to the right angle. Comes in different sizes.
Blow torch	blow torch is a handheld tool . They are designed to apply heat directly via a gas-fed or liquid fuel-fed naked flame for various applications, for soldering joints.
Soldering	Solder is a fusible metal alloy used to create a permanent bond between metal work pieces.
Test bucket	Test bucket, is used to pump water into a first fix system. It test for leaks before pipes are covered and the water supply is turned on.
Soldering matt	Heat shield to prevent the risk of fire and damage to walls and cabinets surrounding soldered joints. It is a must have for professional plumbers
Flux	If there is no flux on the pipe. The solder will not run around the copper fitting, forming a seal. (capillary attraction)
Pipe slice	A pipe slice is used for cutting copper pipe by manually turning it around the pipe until it cuts through the pipe. Comes in 15mm and 22mm sizes.

1.2. Identify the functions of different cells and link their structure to their function (in plants and animals)

- ❖ Example 1 The sperm cell has a tail to swim towards the egg.
- ❖ Example 2 The egg cell contains yolk to feed the zygote
- ❖ Example 3 Red blood cell contains lots of space for haemoglobin to carry oxygen
- ❖ Example 4 The nerve cell is very long so it can transmit messages long distances in the body
- ❖ Example 5 The root hair cell has a long hair that increases the surface area of the root. This allows the root to absorb more water
- ❖ Example 6 The palisade cell is found in leaves. It makes the plants food by photosynthesis. It is long and thin and contains many chloroplasts. This way it gathers more light and can make more food.

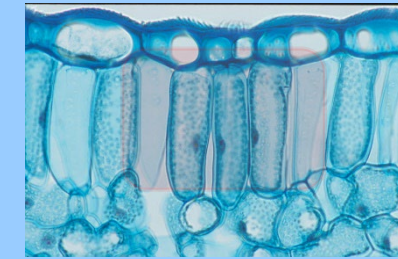
Specialised cells have specific jobs and are adapted to carry out those jobs really well.



Root hair cell in a plant root



Palisade cell



1.3. Describe homeostasis and its role in the nervous and endocrine systems.

Goosebumps

Traps still air between hairs and reduces the speed of heat loss when we are cold.

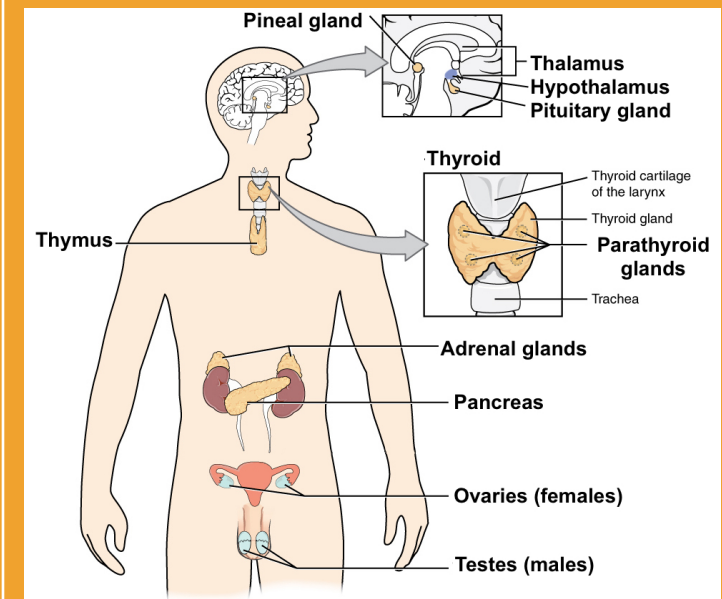


Sweating

When we are too hot, sweating allows heat to escape the body when the sweat evaporates



Along with the **nervous system**, the **endocrine system** coordinates the **body's** functions to **maintain** homeostasis during rest and exercise. The **nervous** and **endocrine systems** also **work together**



Construction Plumbing.6219

Level 1 qualification, Award & Certificate

Term	Meaning
HSE	Health and Safety Executive.
PPE	Personal Protective Equipment
Adjustable spanner	
Adjustable pipe slice	
File	
Pump pliers	
Pipe bender	
Pipe bender slide	
Blow torch	
Soldering	
Test bucket	
Soldering matt	
Flux	
Pipe slice	

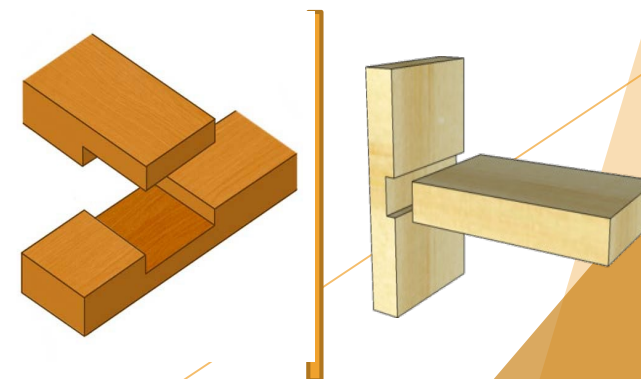
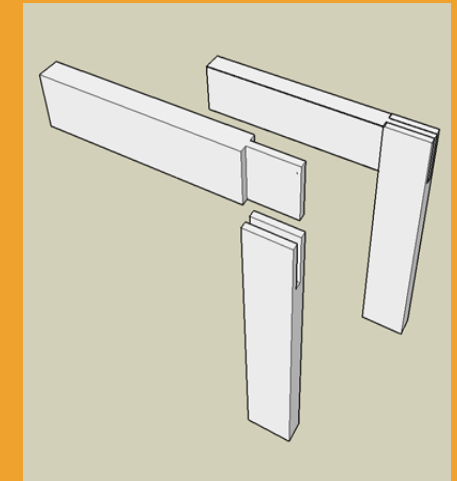
Unit No: Assignment 009/010/128

All units 009/010/128

- Identify the correct PPE.
- Different types of fittings.
- Process of marking out.
- Identify the correct equipment.
- Drain and fill the radiator.
- Process required to prepare fit copper pipes with non-manipulative fittings.
- Select the right tools.
- State the health and safety risks and hazards related to the job.
- Process of cutting, bending and joining of copper pipes.
- Correct proceeded of soldering a pipe.

Unit 105

Bridle Joint.

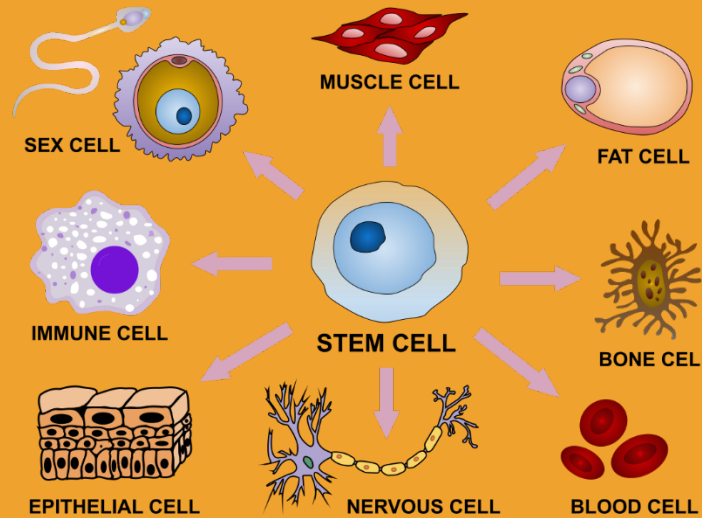


On the left.
T-Halving Joint
Unit 001
On the right
Housing Joint
Unit 002

1.2. Identify the functions of different cells and link their structure to their function (in plants and animals)

- ❖ Example 1 The sperm cell has a tail to swim towards the egg.
- ❖ Example 2 The egg cell contains yolk to feed the zygote
- ❖ Example 3 Red blood cell contains lots of space for haemoglobin to carry oxygen
- ❖ Example 4 The nerve cell is very long so it can transmit messages long distances in the body
- ❖ Example 5 The root hair cell has a long hair that increases the surface area of the root. This allows the root to absorb more water
- ❖ Example 6 The palisade cell is found in leaves. It makes the plants food by photosynthesis. It is long and thin and contains many chloroplasts. This way it gathers more light and can make more food.

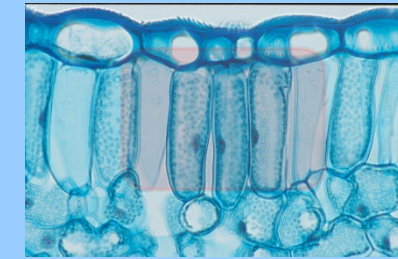
Specialised cells have specific jobs and are adapted to carry out those jobs really well.



Root hair cell in a plant root



Palisade cell



1.3. Describe homeostasis and its role in the nervous and endocrine systems.

Goosebumps

Traps still air between hairs and reduces the speed of heat loss when we are cold.

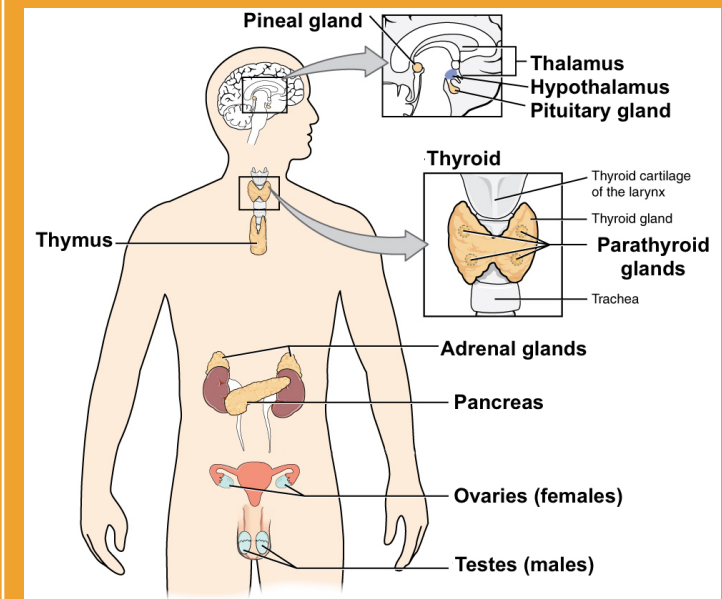


Sweating

When we are too hot, sweating allows heat to escape the body when the sweat evaporates



Along with the **nervous system**, the **endocrine system** coordinates the **body's** functions to **maintain** homeostasis during rest and exercise. The **nervous and endocrine systems** also **work together**



Construction Woodwork.6219

Level 1 qualification, Award & Certificate

Term	Meaning
HSE	Health and Safety Executive.
PPE	Personal Protective Equipment
Steel Ruler	A ruler is a tool for measuring lengths and transferring measurements . A device for drawing straight lines is a straight edge.
Tenon Saw	Tenon saws are commonly used to make the Tenon's used in mortise and Tenon joints. ... These saws can be used on hard and soft woods.
File	A coping saw is used to cut fine, intricate cut-outs or shapes in carpentry or woodworking,
Claw Hammer	A claw hammer is a tool primarily used for driving nails into, or pulling nails from, some other object.
Mallet	Wooden mallets are used in woodworking and carpentry to drive wooden pieces together, such as when assembling dovetail joints, or when hammering dowels or chisels.
Chisel	A long-bladed hand tool with a bevelled cutting edge and a handle which is struck with a hammer or mallet, used to cut or shape wood.
Try Square	An implement used to check and mark right angles in constructional work.
Marking Gauge	A marking gauge , also known as a scratch gauge, is used in woodworking to mark out lines for cutting or other operations.
Side Elevation	A wall forming a side elevation of a house will be any wall that cannot be identified as being a front wall or a rear wall.
Plan Elevation	A plan is a scale drawing showing a 3D/ 2D shape when it is looked at from above.
Soft Wood	Softwood is a collective term for the wood which is produced by coniferous trees, almost all of which are evergreen.
Hard Wood	Hardwood is wood from dicot trees. These are usually found in broad-leaved temperate and tropical forests.

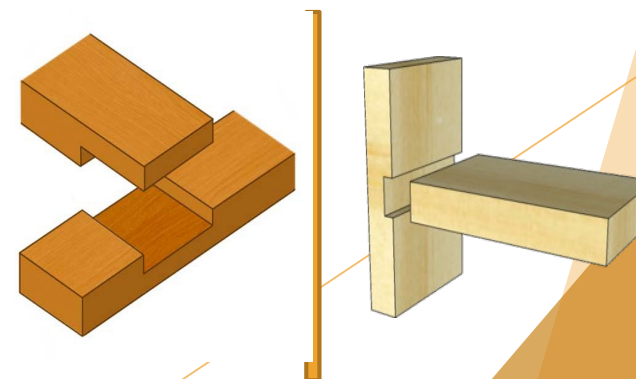
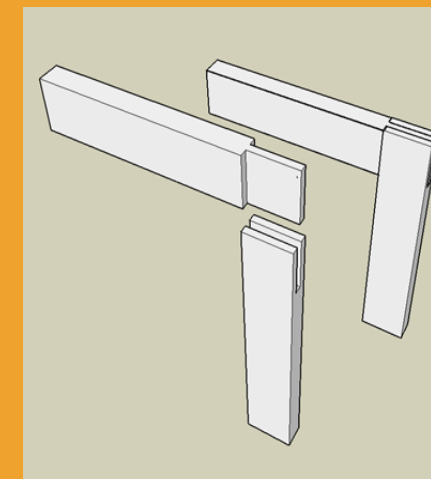
Unit No: Assignment 001/002/105

All units 001/002/105

- Identify the correct PPE.
- Different types of joints.
- Process of marking out.
- Identify the correct equipment.
- Use the correct PPE for the job.
- Select the right materials for the job.
- Select the right tools.
- Construct a woodwork joint.
- Maintaining a safe working environment.
- Good house keeping to keep a safe working environment.
- Clear all debris and clean and maintain tools.

Unit 105

Bridle Joint.

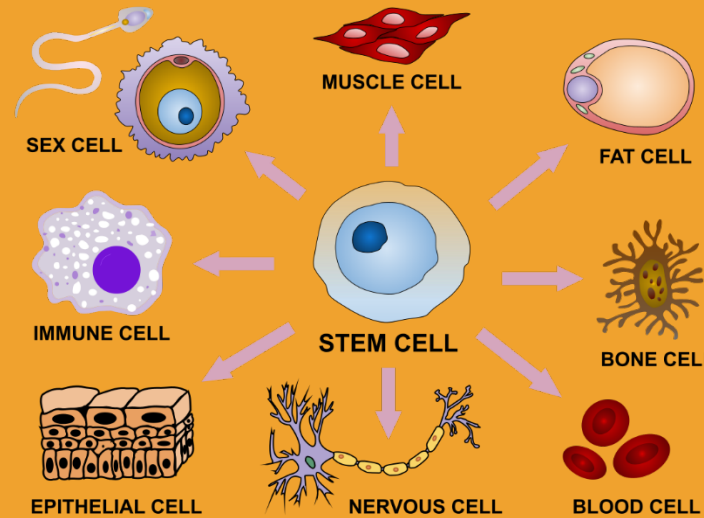


On the left.
T-Halving Joint
Unit 001
On the right
Housing Joint
Unit 002

1.2. Identify the functions of different cells and link their structure to their function (in plants and animals)

- ❖ Example 1 The sperm cell has a tail to swim towards the egg.
- ❖ Example 2 The egg cell contains yolk to feed the zygote
- ❖ Example 3 Red blood cell contains lots of space for haemoglobin to carry oxygen
- ❖ Example 4 The nerve cell is very long so it can transmit messages long distances in the body
- ❖ Example 5 The root hair cell has a long hair that increases the surface area of the root. This allows the root to absorb more water
- ❖ Example 6 The palisade cell is found in leaves. It makes the plants food by photosynthesis. It is long and thin and contains many chloroplasts. This way it gathers more light and can make more food.

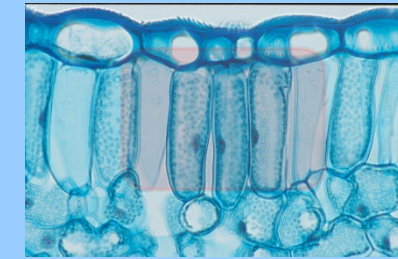
Specialised cells have specific jobs and are adapted to carry out those jobs really well.



Root hair cell in a plant root



Palisade cell



1.3. Describe homeostasis and its role in the nervous and endocrine systems.

Goosebumps

Traps still air between hairs and reduces the speed of heat loss when we are cold.



Sweating

When we are too hot, sweating allows heat to escape the body when the sweat evaporates



Along with the **nervous system**, the **endocrine system** coordinates the **body's** functions to **maintain** homeostasis during rest and exercise. The **nervous** and **endocrine systems** also **work together**

